

Advocacy and Leadership in Social and Healthcare Professions

1st Online Workshop on May 10th



الجامعة الألمانية الأردنية
German Jordanian University



AL-BALQA'
APPLIED
UNIVERSITY



An-Najah National
University





Agenda



Team Neubrandenburg



Challenges



Research Interest



Definitions



Theoretical Approach



Research key questions



Methodology



Timeline



References



Team Neubrandenburg

Professors



Prof. Dr. Northoff



Prof'in. Dr'in.
Dreas

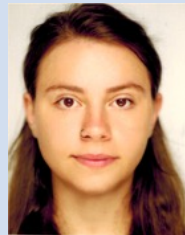


Prof'in. Dr'in.
Kraehmer



Emelie Langer
Research Assistant
M.A. Student – 4th
semester

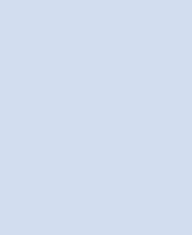
Students



Lea Sophie Rauch
M.A. Student – 2nd
Semester Science
Social Work



Clara Mikolajetz
B.A. Student – 4th
Semester Social
Work



Lisa Matthe
B.A. Student – 4th
Semester Social
Work



Johann Kohls
B.A. Student – 4th
Semester Social
Work

Challenges

Leadership

- Systemic approach
- Ethical approach
- Transactional approach
- Different definitions
 - Leadership as a position
 - leadership as a quality (DE)
- Qualities of a Leader
 - Money
 - Dignity
 - Rights
 - personal

Advocacy

- Networking
- Political influence
- Advocacy in Social Work
- Could Advocacy influence leadership?
- Values and norms
- Triple mandate
- Manage the change

Leadership and Advocacy are interdependent?!



Research interest

Leadership:

Tension between economics and fundamental values in social institutions

- **Scope of action**
- **Leadership style**

Advocacy:

Tension between interests of clients, organizations and social policy

- **Awareness raising**
- **Lobbying**
- **Change Management**

Definitions

Advocacy

- Advocacy describes the claim of professional acting in social work to take responsibility for the dignity and rights of clients
(Graßhoff et al. 2018, p. 473)

Leadership

- ... is „a process by which an individual influences a group of individuals to achieve common goals“
(Northouse 2004, p. 4)
- ... One definition of leadership in social work is „the ability of a social work leader to demonstrate professionalism, confidence, credibility, clear goal setting, solution-focused problem-solving, and effective collaboration to support and empower others“
(Alimo-Metcalfe B./Alban-Metcalfe RJ 2001)



Theoretical approach

- How do leaders perceive themselves?
- What does leadership mean for social workers in different hierarchies levels?
- What are the paradoxes, ambiguities and dilemmas surrounding leadership and advocacy?
- What tensions do leaders perceive?
- What are the different advocacies focused in different leadership style?
- Which role does social work play in intermediating between leadership and advocacy?



Research key question

What are the fundamental tensions between essential values and economics for leadership?

How is it possible for advocacy to deal with different leadership styles and the effect on social structure?

What does "good leadership" mean for professionals in different hierarchies?

What are the possibilities of balancing the different interests of awareness advocating by lobbying and change management?



Methodology

Research interest:

Manage advocacies in a leadership position of a social work service

Desk research

Questions about Leadership & Advocacy

Field access

- Search for two organizations of social work in Mecklenburg-Vorpommern, Germany
- One small to mid organization and one mid to large organization

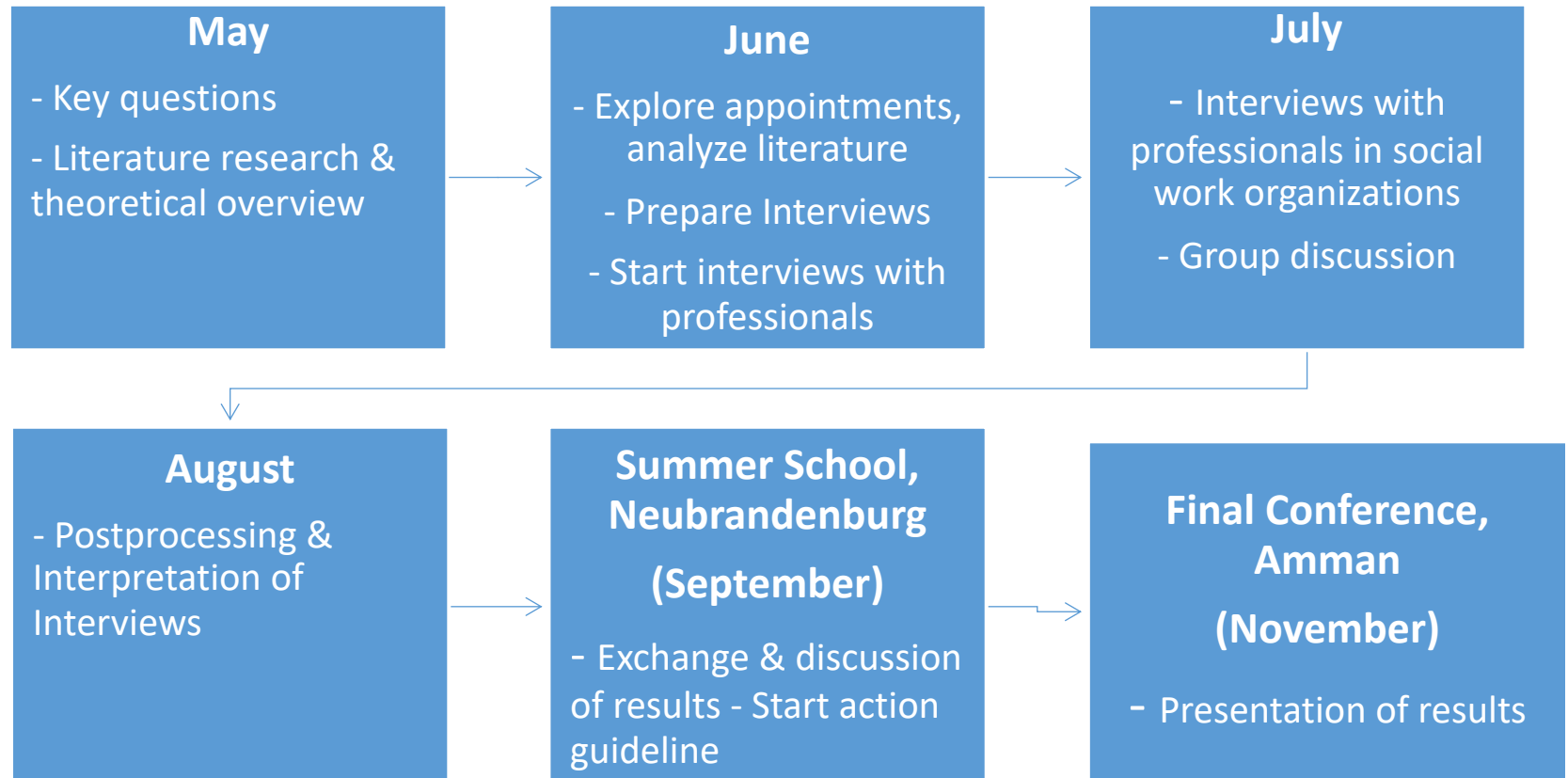
Qualitative research

- 4 semi-structured expert interviews, one from each perspective in the different organizations
- request two experts per social work organization for interview & group discussion
- creating guide
- conducting interviews
- Job shadowing

Presenting of results



Timeline





References

Alimo-Metcalfe B./Alban-Metcalfe RJ (2001): The development of a new transformational leadership questionnaire. J Occup Organ Psychol; 74; p. 1-27

Graßhoff, G. et al. (2018): Soziale Arbeit – eine elementare Einführung. Wiesbaden Springerverlag

Fröse, M. W. (2008): Leadership Diskurse - Neue Herausforderungen für die Führung und Leitung **In:** Bassarak, H. & Wöhrle, A.; Sozialwirtschaft und Sozialmanagement im deutschsprachigen Raum - Bestandsaufnahme und Perspektiven; Augsburg

Mary, N. L. (2008): Transformational Leadership in Human Service Organizations **In:** Administration in Social Work (29:2); Page 105 – 118

Packard, T. (2009): Leadership and Performance in Human Services Organizations **In:** The Handbook of human services management. Los Angeles; Page 143 – 164

Wilson, S. & Lau, B. (2011): Preparing Tomorrow's Leaders and Administrators: Evaluating a Course in Social Work Management **In:** Administration in Social Work (35:3); Page 324 – 342

Thank you!